

Borough, Bankside and Walworth Community Council

**Theme: Safety for Women,
Safety for All**

**Saturday 7 February 2015
1.00 pm**

**St Saviour's and St Olaves's School, New Kent Road
(entrance at Bartholomew Street), London SE1 4AN**

Membership

Councillor Martin Seaton (Chair)
Councillor Claire Maugham (Vice-Chair)
Councillor Maisie Anderson
Councillor Neil Coyle
Councillor Karl Eastham
Councillor Paul Fleming
Councillor Dan Garfield
Councillor Eleanor Kerslake

Councillor Lorraine Lauder MBE
Councillor Maria Linforth-Hall
Councillor Rebecca Lury
Councillor Vijay Luthra
Councillor Darren Merrill
Councillor Adele Morris
Councillor David Noakes

Members of the committee are summoned to attend this meeting

Eleanor Kelly
Chief Executive
Date: Friday 30 January 2015



Item No.	Title	Time
----------	-------	------

Order of Business

Item No.	Title	Time
1.	INTRODUCTION AND WELCOME	
2.	APOLOGIES	
3.	DISCLOSURE OF MEMBERS' INTERESTS AND DISPENSATIONS Members are asked to declare any interest or dispensation and the nature of that interest or dispensation in any of the items under consideration at this meeting.	
4.	ITEMS OF BUSINESS THAT THE CHAIR DEEMS URGENT The chair to advise whether they have agreed to any item of urgent business being admitted to the agenda.	
5.	MINUTES (Pages 1 - 7) To agree the minutes of the meeting held on 29 November 2014 as a correct record of the meeting.	
6.	PETITIONS AND DEPUTATIONS The chair to advise on any deputations or petitions received.	1.10 pm
7.	YOUTH COMMUNITY SLOT An opportunity for young people to present items to the community council.	1.15 pm

Item No.	Title	Time
8.	PROPOSED THEME: SAFETY FOR WOMEN, SAFETY FOR ALL	1.25 pm
	The theme is safety for women and safety for all	
	<ul style="list-style-type: none"> • Introduction from Councillor Radha Burgess, deputy cabinet member for women's safety. • Southwark women's safety charter (of Principles): The launch, what does it mean and list of venues that have signed up to it. • Discussion and presentations from women's groups and voluntary groups in the borough - how do we ensure women play a role in their community? 	
	<p>The link for the women's safety charter page is http://www.southwark.gov.uk/womenssafety</p>	
9.	THE NEW SOUTHWARK PLAN	2.10 pm
	Consultation on the New Southwark Plan will run until the March 2015.	
	Note: There will be a pre-meeting between 12.15 pm until 12.45 pm at the venue so people have an opportunity to discuss the Southwark Plan with officers.	
	Contact officer Susannah Pettit	
	TEA AND COFFEE AVAILABLE AT 2.20 PM	
10.	PUBLIC QUESTION TIME (Page 8)	2.30 pm
	A public question form is included on page 8 of the agenda pack.	
	This is an opportunity for public questions to be addressed to the chair.	
	Residents or persons working in the borough may ask questions on any matter in relation to which the council has powers or duties.	
	Responses may be supplied in writing following the meeting.	

Item No.	Title	Time
11.	COMMUNITY ANNOUNCEMENTS	2.40 pm
	Police updates on community safety matters	
	Licensing policy consultation (information stall)	
	The launch of the neighbourhood fund 2015	
	Fairtrade fortnight	
	Southwark Quietway routes – proposals	
12.	COMMUNITY COUNCIL QUESTION TO COUNCIL ASSEMBLY	2.50 pm
	Each community council may submit one question to a council assembly meeting that has previously been considered and noted by the community council.	
	Any question to be submitted from a community council to council assembly should first be the subject of discussion at a community council meeting. The subject matter and question should be clearly noted in the community council's minutes and thereafter the agreed question can be referred to the constitutional team.	
	The community council is invited to consider if it wishes to submit a question to the ordinary meeting of council assembly in March 2015.	
	Note: Deadline for questions is midnight on Thursday 11 March 2015.	
13.	LOCAL PARKING AMENDMENTS (Pages 9 - 16)	3.00 pm
	Note: This is an executive function.	
	Members to consider the recommendations contained within the report.	
14.	EAST CAMBERWELL PARKING ZONE REVIEW (Pages 17 - 23)	
	Note: This is an executive function.	
	Members to consider the recommendations within the report.	
15.	CLEANER GREENER SAFER: FUNDING REALLOCATION (Pages 24 - 30)	3.20 pm
	Note: This is an executive function.	
	Members to consider the recommendations within the report.	

Item No.	Title	Time
16.	CLEANER GREENER SAFER CAPITAL FUNDING 2015 - 2016 - DECISIONS (Pages 31 - 39)	3.20 pm

Note: This is an executive function.

Members to consider the recommendations contained in the report.

Date: Friday 30 January 2015

INFORMATION FOR MEMBERS OF THE PUBLIC

CONTACT: Sean Usher, Constitutional Officer Tel: 020 7525 2713 or email: sean.usher@southwark.gov.uk
Website: www.southwark.gov.uk

ACCESS TO INFORMATION

On request, agendas and reports will be supplied to members of the public, except if they contain confidential or exempted information.

ACCESSIBLE MEETINGS

The council is committed to making its meetings accessible. For further details on building access, translation and interpreting services, the provision of signers and other access requirements, please contact the Constitutional Officer.

Disabled members of the public, who wish to attend community council meetings and require transport assistance in order to attend, are requested to contact the Constitutional Officer. The Constitutional Officer will try to arrange transport to and from the meeting. There will be no charge to the person requiring transport. Please note that it is necessary to contact us as far in advance as possible, and at least three working days before the meeting.

BABYSITTING/CARERS' ALLOWANCES

If you are a resident of the borough and have paid someone to look after your children or an elderly or disabled dependant, so that you can attend this meeting, you may claim an allowance from the council. Please collect a claim form from the Constitutional Officer at the meeting.

DEPUTATIONS

Deputations provide the opportunity for a group of people who are resident or working in the borough to make a formal representation of their views at the meeting. Deputations have to be regarding an issue within the direct responsibility of the Council. For further information on deputations, please contact the Constitutional Officer.

**For a large print copy of this pack,
please telephone 020 7525 2713.**



Borough, Bankside and Walworth Community Council

MINUTES of the OPEN section of the Borough, Bankside and Walworth Community Council held on Saturday 29 November 2014 at 1.00 pm at Pembroke House (Lower Hall), 80 Tatum Street, London, SE17 1QR

PRESENT: Councillor Martin Seaton (Chair)
 Councillor Claire Maugham
 Councillor Maisie Anderson
 Councillor Paul Fleming
 Councillor Eleanor Kerlake
 Councillor Lorraine Lauder MBE
 Councillor Maria Linforth-Hall
 Councillor Darren Merrill
 Councillor Adele Morris
 Councillor David Noakes

OFFICER SUPPORT: Dr Ruth Wallis, Director of Public Health
 Jin lim, Assistant Director of Public Health
 Joseph Okai, Project manager, Public Realm
 Pauline Bonner, Community Council Development Officer
 Virginia Wynn-Jones, Constitutional Officer

1. INTRODUCTION AND WELCOME

The chair welcomed councillors, members of the public and officers to the meeting.

2. APOLOGIES

Apologies were received from Councillors Neil Coyle, Karl Eastham, Dan Garfield and Rebecca Lury.

3. NOTIFICATION OF ANY ITEMS OF BUSINESS WHICH THE CHAIR DEEMS URGENT

There were none.

4. DISCLOSURE OF MEMBERS' INTERESTS AND DISPENSATIONS

There were none.

5. MINUTES

Councillors considered the draft minutes of the Borough, Bankside and Walworth Community Council meeting held on 29 September 2014.

RESOLVED:

That the minutes of the meeting held on 29 September 2014 be amended so that Item 17, under the final line of the bullet point referring to Site L read “people cutting across pavements at the corner of Weber Street.”

The minutes were then agreed as a correct record and signed by the chair.

6. THEME: HEALTHY WINTER AND EBOLA UPDATE

There were presentations from Dr Rachel Heathcock of Public Health England and Dr Ruth Wallis of Southwark Primary Care Trust on Ebola, emphasising that there is very little risk of Ebola in the UK, and that there is no risk of transmission of the virus unless someone has been in contact with the bodily fluids of someone who has symptoms of Ebola. They recommended contacting NHS Choices and www.gov.uk/phe for further information.

There was a presentation from Fraser Serle of the Warmer Winter team from the London Boroughs of Lambeth and Southwark, stating the importance of staying warm. He encouraged people to eat well, drink regularly and wear layers; and also that the Citizens Advice Bureaux had a lot of experience in helping give financial support, including getting energy companies to grant credit for heating bills.

6.1 HEALTH SERVICES

There was a presentation from Jin Lim from Southwark Public Health on HIV, tuberculosis and flu, emphasising the importance of getting the flu vaccine every year.

6.2 SOUTHWARK CARERS

There was a presentation from Verinder Mander of Southwark Carers, who spoke about the economic and social impact of unpaid carers, and the difficulties they often face.

7. OLDER PEOPLE'S SLOT

8. YOUTH COMMUNITY COUNCIL

The youth community council updated the meeting on their activities. They were recruiting more members and planned various workshops; please contact Pauline Bonner at Southwark Council for details.

9. BUDGET CHALLENGE

Councillor Fiona Colley, cabinet member for finance, strategy and performance, presented the budget challenge. The latest cuts to the council's budget had led to the council needing to cover a £31 million funding gap this year. The public went through the budget challenge during the break.

10. COMMUNITY ANNOUNCEMENTS

There had been a surge in membership of mutual credit unions, as a financially healthy alternative to pay-day lenders. There was a day of action on 13 December 2014 at 11am at St Peter's church.

Deryck Browne of the African Health Policy Network emphasised the importance of testing for prostate cancer.

Joseph Okai, from public realm, informed the meeting about the flood risk management strategy and encouraged people to take part in the consultation.

The transport planning team are consulting on the draft cycling strategy; this can be found at www.southwark.gov.uk/cyclingstrategy.

Global Giving highlighted their charitable work, principally connecting donors with charities to maximise the benefits for both. There is also Giving Time, an online volunteering platform available at <http://giving-time.org/>.

The Carnaval del Pueblo had arranged events in East Street on 7, 14 and 21 December 2014.

Inspector Barton introduced the police update, confirming that this was his last meeting as he was moving out of the area. After this meeting, the new inspector is Inspector Martin Nicholson. The police's focus had been on Operation Equinox, aiming at reducing violent assault. Inspector Barton also gave crime prevention advice for over the Christmas holidays. This included avoiding putting presents on display where they're visible through a window, keeping an eye on your bags whilst out shopping, and keeping a light on while you're out in the evening.

11. REFRESH AND UPDATE OF THE COMMUNITY INFRASTRUCTURE PROJECT LIST (CIPL)

Note: This is an executive function.

Members considered the information contained in the report.

RESOLVED:

That this item be deferred to a future meeting, in order for the concerns recently raised by councillors to be responded to by officers.

12. PUBLIC QUESTION TIME

An additional public question was received in writing after the meeting.

Question:

On 18 November 2014 the cabinet pledged £63m over 15 years for the Elephant and Castle transport improvements, to be recouped, it is hoped, from Section 106 planning agreements and the Community Infrastructure Levy. So as to provide assurance that the council's capital programme will not be over-stretched, and that other projects will not be deprived of resources, please could full particulars be given of:

- (1) the future developments which will provide the S106 and CIL resources; and
- (2) the agreement that the GLA have given "to underwrite the financing costs" [para 82 of the cabinet report] of the E&C transport improvements, in particular whether this agreement includes making good any shortfall of S106 and CIL resources below £63m?

Officer response:

The agreement between TfL, the GLA and Southwark Council is only at a preliminary stage with a memorandum of understanding expected early next year. The £63m is made up of £48m expected costs and £15m contingency. The council along with TfL have identified expected S106 and Southwark CIL income from new developments primarily in the Elephant & Castle to cover this £48m as detailed in the attached spread sheet.

The council has already received sufficient funds to cover the next few years payments to TfL, along with over £16m committed from Lend Lease developments. Most of the identified sites are those coming forward in the next 5 years, with additional sites expected to come forward later in the 15 year time frame. The £15m, if need, has been profiled to come from Southwark CIL at a rate of £1m a year over 15 years.

13. PETITIONS AND DEPUTATIONS

There were no petitions or deputations.

14. COMMUNITY COUNCIL HIGHWAYS CAPITAL INVESTMENT 2014 - 2015

Note: This is an executive function.

Members considered the information contained in the report.

RESOLVED:

That this item be deferred to a future meeting, in order for the concerns recently raised by councillors to be responded to by officers.

15. ONE HOUR FREE PARKING AT SHOPPING PARADES

Note: This is an executive function.

An officer introduced the report. Members considered the information contained in the report. Members had questions for the officer.

The officer undertook to bring a rationale for Great Suffolk Street to Councillors Morris and Noakes and reconsider its inclusion.

RESOLVED:

That the community council approved the list of locations set out in Appendix 1 that will be consulted on the introduction of one hour free parking be approved.

16. LOCAL PARKING AMENDMENTS

17. ESTATE PARKING SCHEME - TABARD GARDENS

Note: This is an executive function.

Members considered the information contained in the report.

RESOLVED:

1. That the following local traffic and parking amendments are approved for implementation subject to the outcome of any necessary statutory procedures:
 - Tabard Gardens Estate Abinger House – to be included in an estate parking scheme
 - Tabard Gardens Estate Shere House – to be included in an estate parking scheme
 - Tabard Estate Selbourne House – to be included in estate parking scheme
 - Tabard Gardens Estate Becket House – to be included in estate parking scheme
 - Tabard Gardens Estate Balin House – to be included in estate parking scheme
 - Tabard Gardens Estate Brenley House – to be included in estate parking scheme
 - Tabard Gardens Estate Betsham House – to be included in estate parking scheme
 - Tabard Gardens Estate Northfleet House – to be included in estate parking scheme
 - Tabard Gardens Estate Boughton House – to be included in estate parking scheme

- Tabard Gardens Estate Evnsford House – to be included in estate parking scheme
 - Tabard Gardens Estate Kellow House – to be included in estate parking scheme
 - Tabard Gardens Estate Pilgrimage Street – To be included in estate parking scheme.
2. That the inclusion of Elizabeth Estate in the estate parking scheme, as the area was outside Tabard Gardens.

17. GLENGALL ROAD - INTRODUCTION OF 'NO WAITING AT ANYTIME'

Note: This is an executive function.

Members considered the information contained in the report.

RESOLVED:

That the non-strategic traffic and parking arrangements detailed in the drawings attached to the report be approved for implementation, subject to any necessary statutory procedures:

Glengall Road – introduction of 'No waiting at any time' (double yellow lines).

18. UPPER GROUND - INTRODUCING TIME LIMIT TO PARKING IN TWO EXISTING DISABLED BAYS

Note: This is an executive function.

Members considered the information contained in the report.

RESOLVED:

That the non-strategic traffic and parking arrangements detailed in the drawings attached to the report be approved for implementation, subject to any necessary statutory procedures:

Upper Ground – between Hatfields and Rennie Street:

Introduce a parking limit of a maximum of four hours per day in the existing two disabled bays.

19. COMMUNITY COUNCIL QUESTION TO COUNCIL ASSEMBLY

The community council agreed to submit the following question to council assembly:

What support is the council providing to carers in the light of recent government cuts?

Meeting ended at 4.20 pm

CHAIR:

DATED:



Borough, Bankside and Walworth Community Council

Public Question form

Your name:

Your mailing address:

What is your question?

Please give this form to Sean Usher, Constitutional Officer

Item No. 13.	Classification: Open	Date: 7 February 2015	Meeting Name: Borough, Bankside and Walworth Community Council
Report title:		Local traffic and parking amendments	
Ward(s) or groups affected:		Chaucer	
From:		Head of Public Realm	

RECOMMENDATION

1. It is recommended that the following local traffic and parking amendments, detailed in the appendices to this report, are approved for implementation subject to the outcome of any necessary statutory procedures:
 - Meadow Row – install double yellow lines and extend existing permit holder only parking bays to improve access and resident parking availability.
 - Newcomen Street – remove existing permit parking bay and replace with double yellow lines and reprovide the parking bay to east of the junction with Tennis Street.

BACKGROUND INFORMATION

2. Paragraph 16 of Part 3H of the Southwark constitution delegates decision making for non-strategic traffic management matters to the community council:
 - The introduction of single traffic signs
 - The introduction of short lengths of waiting and loading restrictions
 - The introduction of road markings
 - The setting of consultation boundaries for consultation on traffic schemes
 - The introduction of destination disabled parking bays
 - Statutory objections to origin disabled parking bays.
3. This report gives recommendations for two local traffic and parking amendments, involving traffic signs, waiting restrictions and road markings.
4. The origins and reasons for the recommendations are discussed within the key issues section of this report.

KEY ISSUES FOR CONSIDERATION

Meadow Row

5. The parking design team was contacted by Councillor Maugham, on behalf of constituents of Meadow Row, who is concerned by obstructive parking on Meadow Row.
6. Meadow Row connects New Kent Road to Rockingham Street and is part of

Newington (D) controlled parking zone (CPZ) that operates Monday to Friday 8.30am to 6.30pm. Parking is permitted within an existing (D) CPZ permit holder bay (two spaces) and a blue badge (disabled) bay (one space). The remaining kerb is restricted with a single yellow line that operates during CPZ hours.

7. Residents report that, in the evenings and at the weekend, motorists park obstructively in Meadow Row with wheels on the footway and on the single yellow lines. This causes obstruction in the street to pedestrians and other vehicles. Residents consider that the vehicles are associated with visitors to the Coronet on New Kent Road.
8. An officer carried out a site visit on 26 September 2014 and also met with Councillor Maugham and two members of the Albert Barnes TRA on 31 October 2014 to discuss the parking.
9. During the meeting residents raised concerns about the behaviour of visitors and suggested that double yellow lines may prevent problems occurring. The officer explained that the council can only install double yellow lines to deal with traffic and parking issues and not directly to deal with (or deter) anti-social behaviour.
10. Photographs have been provided to give an example of the obstructive parking and officers consider that new restrictions are justified to enable the movement of traffic.
11. It is recommended, as shown in Appendix 1, that the existing permit (D) parking bay is extended, a new permit (D) parking bay installed to increase resident parking availability and that the single yellow line is converted to double yellow lines to prevent obstructive and dangerous parking at any time.

Newcomen Street

12. An officer noted damage was occurring to the tactile paving (installed to assist the blind and partially sighted) at the junction of Tennis Street and Newcomen Street.
13. Damage is caused when left turning vehicles (from Tennis Street into Newcomen Street) overrun the footway. Large vehicles are forced to overrun the pavement when the permit parking bay opposite the junction is occupied.
14. An officer carried out a site visit on 16 October 2014 and identified that removal of the parking bay and replacement with double yellow lines would enable the left turning vehicles to turn without overrun.
15. It is known that parking pressure (permit to space ratio) in this parking zone (London Bridge - F) is high and therefore officers have identified that the permit bay can be reprovided in Newcomen Street, to the east of the junction with Tennis Street. Swept path analysis shows that this proposal will not inhibit vehicles leaving Northfleet House.
16. It is recommended, as shown in Appendix 2, that the existing permit holder (F) bay is removed (and relocated to east of the junction with Tennis Street) and double yellow lines are installed to prevent obstructive parking.

Policy implications

17. The recommendations contained within this report are consistent with the policies of the Transport Plan 2011, particularly:
- Policy 1.1 – pursue overall traffic reduction
 - Policy 4.2 – create places that people can enjoy
 - Policy 8.1 – seek to reduce overall levels of private motor vehicle traffic on our streets.

Community impact statement

18. The policies within the transport plan are upheld within this report and have been subject to an equality impact assessment.
19. The recommendations are area based and therefore will have greatest affect upon those people living, working or traveling in the vicinity of the areas where the proposals are made.
20. The introduction of yellow lines at junctions gives benefit to all road users through the improvement of inter-visibility and therefore road safety.
21. There is a risk that new restrictions may cause parking to be displaced and, indirectly, have an adverse impact upon road users and neighboring properties at that location. However this cannot be entirely preempted until the recommendations have been implemented and observed.
22. With the exception of those benefits and risks identified above, the recommendations are not considered to have a disproportionate effect on any other community or group.
23. The recommendations support the council's equalities and human rights policies and promote social inclusion by:
- Providing improved access for key services such as emergency and refuge vehicles.
 - Improving road safety, in particular for vulnerable road users, on the public highway.

Resource implications

24. All costs arising from implementing the recommendations will be fully contained within the existing public realm budgets.

Legal implications

25. Traffic management orders would be made under powers contained within the Road Traffic Regulation Act (RTRA) 1984.
26. Should the recommendations be approved the council will give notice of its intention to make a traffic order in accordance with the Local Authorities Traffic Order (Procedure) (England and Wales) Regulations 1996.

27. These regulations also require the council to consider any representations received as a result of publishing the draft order for a period of 21 days following publication of the draft order.
28. Should any objections be received they must be properly considered in the light of administrative law principles, Human Rights law and the relevant statutory powers.
29. By virtue of section 122, the council must exercise its powers under the RTRA 1984 so as to secure the expeditious, convenient and safe movement of vehicular and other traffic including pedestrians, and the provision of suitable and adequate parking facilities on and off the highway.
30. These powers must be exercised so far as practicable having regard to the following matters:
 - The desirability of securing and maintaining reasonable access to premises
 - The effect on the amenities of any locality affected including the regulation and restriction of heavy commercial traffic so as to preserve or improve amenity
 - The national air quality strategy
 - Facilitating the passage of public service vehicles and securing the safety and convenience of their passengers
 - Any other matters appearing to the council to be relevant.

Consultation

31. Where public or stakeholder consultation has already been completed, this is described within the key issues section of the report.
32. The implementation of changes to parking requires the making of a traffic order. The procedures for making a traffic order are defined by national Regulations which include statutory consultation and the consideration of any arising objections.
33. Should the recommendations be approved the council must follow the procedures contained within Part II and III of the Regulations which are supplemented by the council's own processes. This process is summarised as:
 - Publication of a proposal notice in a local newspaper (Southwark News)
 - Publication of a proposal notice in the London Gazette
 - Display of notices in roads affected by the orders
 - Consultation with statutory authorities
 - Making available for public inspection any associated documents (eg. plans, draft orders, statement of reasons) via the council's website or by appointment at 160 Tooley Street, SE1
 - A 21 day consultation period during which time any person may comment upon or object to the proposed order.
34. Following publication of the proposal notice, any person wanting to object must make their objection in writing, state the grounds on which it is made and send it to the address specified on the notice.
35. Should an objection be made that officers are unable to resolve so that it is

withdrawn, it will be reported to the community council for determination. The community council will then consider whether to modify the proposals, accede to or reject the objection. The council will subsequently notify all objectors of the final decision.

Programme timeline

36. If these items are approved by the community council they will progressed in line with the below, approximate timeframe:

- Traffic orders (statutory consultation) – March to April 2015
- Implementation – May to June 2015.

BACKGROUND DOCUMENTS

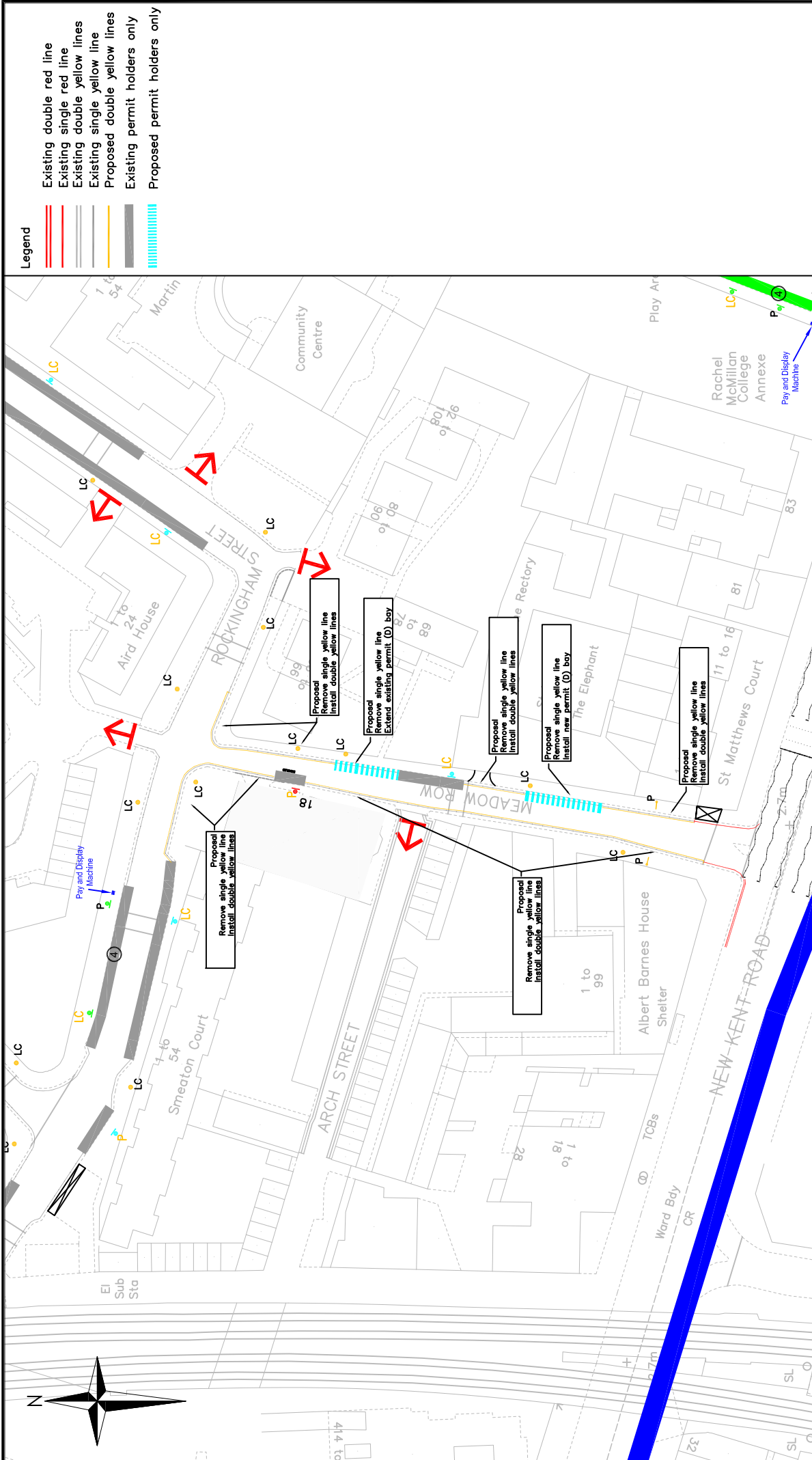
Background Papers	Held At	Contact
Transport Plan 2011	Southwark Council Environment and Leisure Public Realm projects Parking design 160 Tooley Street, London SE1 2QH Online: http://www.southwark.gov.uk/info/200107/transport_policy/1947/southwark_transport_plan_2011	Tim Walker 020 7525 2021


APPENDICES

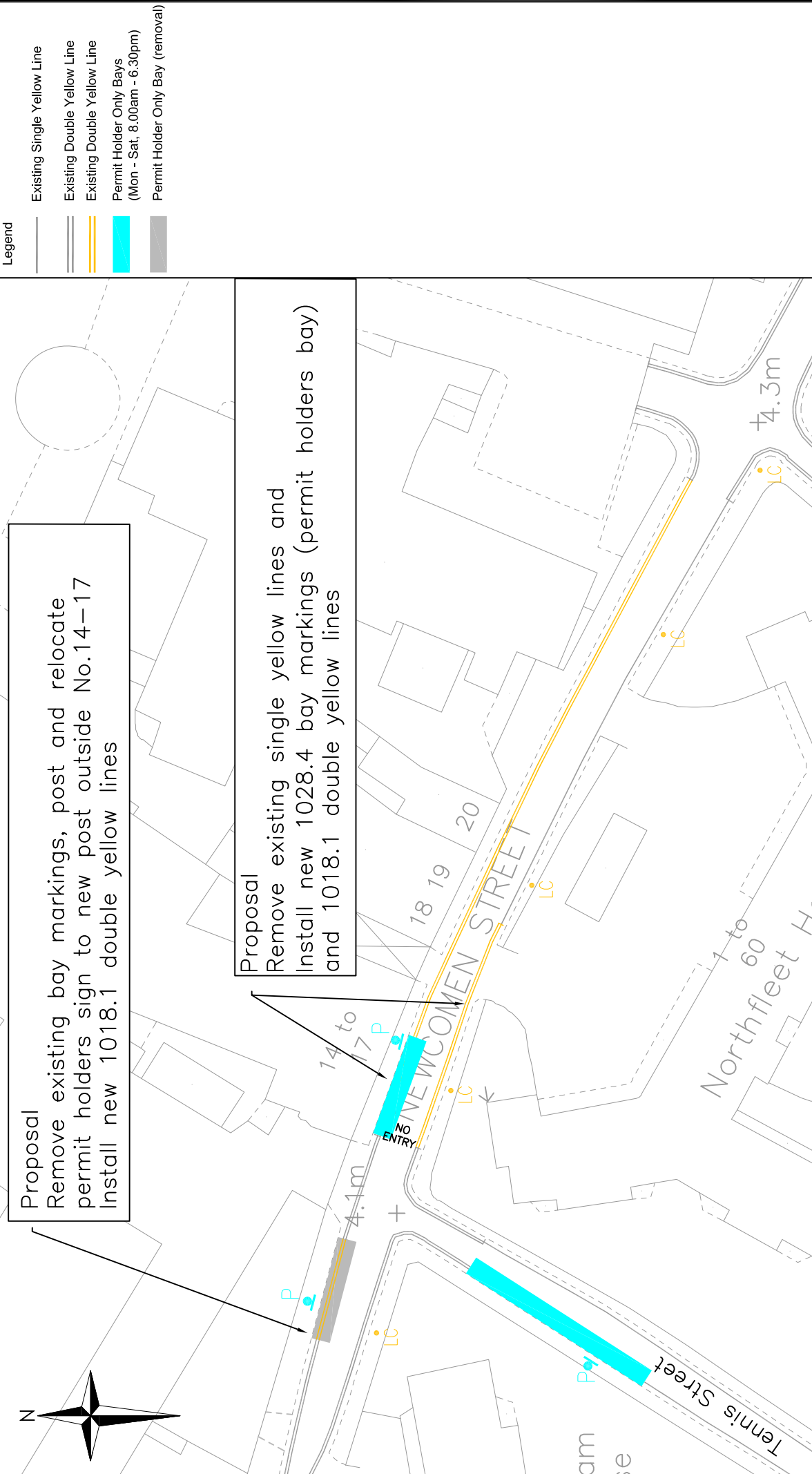
No.	Title
Appendix 1	Meadow Row – extend existing and install new permit holders bays and install double yellow lines
Appendix 2	Newcomen Street – relocate existing permit bay and install double yellow lines

AUDIT TRAIL

Lead Officer	Des Waters, Head of Public Realm	
Report Author	Tim Walker, Senior Engineer	
Version	Final	
Dated	27 January 2015	
Key Decision?	No	
CONSULTATION WITH OTHER OFFICERS / DIRECTORATES / CABINET MEMBER		
Officer Title	Comments Sought	Comments Included
Director of Legal Services	No	No
Strategic Director of Finance and Corporate Services	No	No
Cabinet Member	No	No
Date final report sent to Constitutional Team	27 January 2015	



<p>Public Realm Projects Parking Design</p> <p>Environment and Leisure Floor 3, Hub 1 Southwark Council 160 Tooley Street London, SE1P 5LX www.southwark.gov.uk/parkingprojects</p>		<p>Community Council BOROUGH, BANKSIDE AND WALWORTH</p>		<p>Ward(s) CHAUCER</p>	
		<p>Date 05/11/14</p> <p>Dwg No. 1415Q3_004</p> <p>Status APPENDIX 1</p>	<p>Scale 1:1000 @ A4</p> <p>Drn MH</p> <p>Chk TW</p> <p>App TW</p>	<p>Rev A</p>	<p>Rev</p> <p>Date</p> <p>Description</p> <p>Drn</p> <p>Chk</p> <p>App</p>
<p>Project 1415Q3 LOCAL PARKING AMENDMENTS</p>		<p>Drawing Title MEADOW ROW PROPOSED DOUBLE YELLOW LINES PROPOSED EXTENSION PERMIT (D) BAYS</p>		<p>© Crown copyright and database rights 2014. Ordnance Survey (0100019522)</p>	



Legend

	Existing Single Yellow Line
	Existing Double Yellow Line
	Existing Double Yellow Line
	Permit Holder Only Bays (Mon - Sat, 8.00am - 6.30pm)
	Permit Holder Only Bay (removal)

Proposal
 Remove existing bay markings, post and relocate permit holders sign to new post outside No.14-17
 Install new 1018.1 double yellow lines

Proposal
 Remove existing single yellow lines and install new 1028.4 bay markings (permit holders bay) and 1018.1 double yellow lines

Public Realm Projects Parking Design Environment and Leisure Floor 3, Rub 1 Southwark Council 160 Tooley Street London, SE1P 5LX www.southwark.gov.uk/parkingprojects		Project 1415 LOCAL PARKING AMENDMENTS	Community Council BOROUGH, BANKSIDE AND WALWORTH
		Drawing Title NEWCOMEN STREE PROPOSED RELOCATION OF PERMIT BAY AND PROPOSED DOUBLE YELLOW LINES	Ward(s) CHAUCER
		Date 30/09/14	Scale 1:500 @ A4
		DWG No. 1415Q3010	Chk TW
		Status APPENDIX 2	App TW
		Rev A	Description Drn Chk App

Item No. 14.	Classification: Open	Date: 7 February 2015	Meeting Name: Borough, Bankside and Walworth Community Council
Report title:		East Camberwell parking zone review	
Ward(s) or groups affected:		Brunswick Park, Camberwell Green, Faraday	
From:		Head of Public Realm	

RECOMMENDATION

1. That the community council comment upon the proposed consultation boundary and methods for the review of East Camberwell (EC) controlled parking zone (CPZ).

BACKGROUND INFORMATION

2. The council's 2014/15 parking design programme was approved in September 2014 by the Head of Public Realm in conjunction with the Cabinet Member for Regeneration, Planning and Transport.
3. The programme includes a review of the existing East Camberwell (EC) controlled parking zone (CPZ). This review has been included within the programme following representations by local residents, via their resident association and ward councilors, that it was necessary to reevaluate the times of operation of the zone.
4. Part 3H of the council's constitution provides that community councils should be consulted on strategic traffic management matters such as whether to change the times of operation of a parking zone and the related method of consultation.
5. EC CPZ was introduced in 2009 on an experimental basis. In 2010 the zone was made permanent after considering the comments that were received the experimental period. In 2012, following consultation, the zone was extended to cover Southampton Way, Wells Way and Parkhouse Street.

KEY ISSUES FOR CONSIDERATION

Consultation area

6. The area recommended for consultation is shown on the plan contained at Appendix 1 and includes all properties within the boundary of the existing EC CPZ.
7. It is noted that the CPZ is located in both Camberwell and Borough, Bankside and Walworth community council areas.

Consultation methods

8. The method of consultation and decision making is fundamentally determined by the council's constitution.

9. When reviewing an existing parking zone (referred to as a 4th stage review) officers will survey the zone and carry out an informal (non-statutory consultation). The objective of the survey and consultation is to identify issues that may have arisen since the zone was introduced and to put forward possible solutions.
10. Before a final decision is taken, the community council will again be consulted. The procedure is summarised in Figure 1 below and full details on the process are contained within Appendix 2.

Figure 1

Phase		Expected dates
Survey & consultation	Parking surveys	February 2015
	Consultation pack and questionnaire to all residents, businesses and stakeholders	March 2015
	Draft report to community council	May 2015 (date of meeting tbc)
Decision making	Final report to Cabinet Member for Regeneration, Planning and Transport	June 2015
Delivery	Road Safety Assessments Detailed audit review Construction	Summer 2015

Scope of consultation

11. It should be noted that the scope of the review will cover the following key issues:
 - the times of operation of the zone (consideration of lesser hours of controls);
 - the days of operation of the zone (consideration of Saturday controls);
 - detailed design issues (modifications to type/position of existing bays); and
 - the identification of opportunities to declutter parking signs

Policy implications

12. The recommendations contained within this report are consistent with the policies of the Transport Plan 2011, particularly:
 - Policy 1.1 – pursue overall traffic reduction;
 - Policy 4.2 – create places that people can enjoy; and
 - Policy 8.1 – seek to reduce overall levels of private motor vehicle traffic on our streets

Community impact statement

13. The policies within the transport plan are upheld within this report and have been subject to an equality impact assessment.
14. The recommendations are area based and therefore will have greatest affect upon those people living, working or traveling in the vicinity of the areas where the proposals are made.

15. The introduction of a parking zone contributes to an improved environment through the elimination of on-street commuter parking and the associated reduction of local and borough-wide traffic levels.
16. There is a risk that new restrictions may cause parking to be displaced and, indirectly, have an adverse impact upon road users and neighbouring properties at that location. However this cannot be entirely preempted until the recommendations have been implemented and observed.
17. With the exception of those benefits and risks identified above, the recommendations are not considered to have a disproportionate affect on any other community or group.
18. The recommendations do not conflict with the Council's commitment to equalities or to the protection of human rights. In addition, part of the aim of the consultation is to promote social inclusion by:
 - providing improved access for key services such as emergency and refuge vehicles; and
 - improving road safety, in particular for vulnerable road users, on the public highway.
19. The consultation leaflets will meet communication guidance with a languages page providing advice as to how to access the Council's translation service. Furthermore, large format leaflets will be available for those with visual impairment.

Resource implications

20. The costs of the parking zone project, including staff fees, consultation and implementation (if supported) will cost approximately £40,000 which will be funded through capital provisions already established for this purpose.
21. A more accurate estimate of the costs from this scheme will be reported at the end of the consultation.
22. The cost code for parking zone projects is L-5110-0042.

Legal implications

23. The community councils are being asked to comment upon the proposed consultation boundary and methods for reviewing the East Camberwell controlled parking zone. Community councils are entitled to consider these issues pursuant to paragraph 3H of the Council's Constitution.
24. The Equality Act 2010 introduced the public sector equality duty, which merged existing race, sex and disability equality duties and extended them to include other protected characteristics; namely age, gender reassignment, pregnancy and maternity, religion and belief and sex and sexual orientation, including marriage and civil partnership. In summary those subject to the equality duty, which includes the Council, must in the exercise of their functions: (i) have due regard to the need to eliminate unlawful discrimination, harassment and victimisation; and (ii) foster good relations between people who share a protected characteristic and those who do not. It is not envisaged that the consultation referred to in this report will conflict with the requirements of the Act.

25. The Human Rights Act 1998 imposed a duty on the Council as a public authority to apply the European Convention on Human Rights; as a result the Council must not act in a way which is incompatible with these rights. It is not envisaged that the consultation referred to in this report will conflict with any of the protected rights.

Consultation

26. Consultation on the outline of the project has been carried out with the Cabinet Member for Regeneration, Planning and Transport.
27. All aspects of future consultation are detailed in the key issues section of this report.

BACKGROUND PAPERS

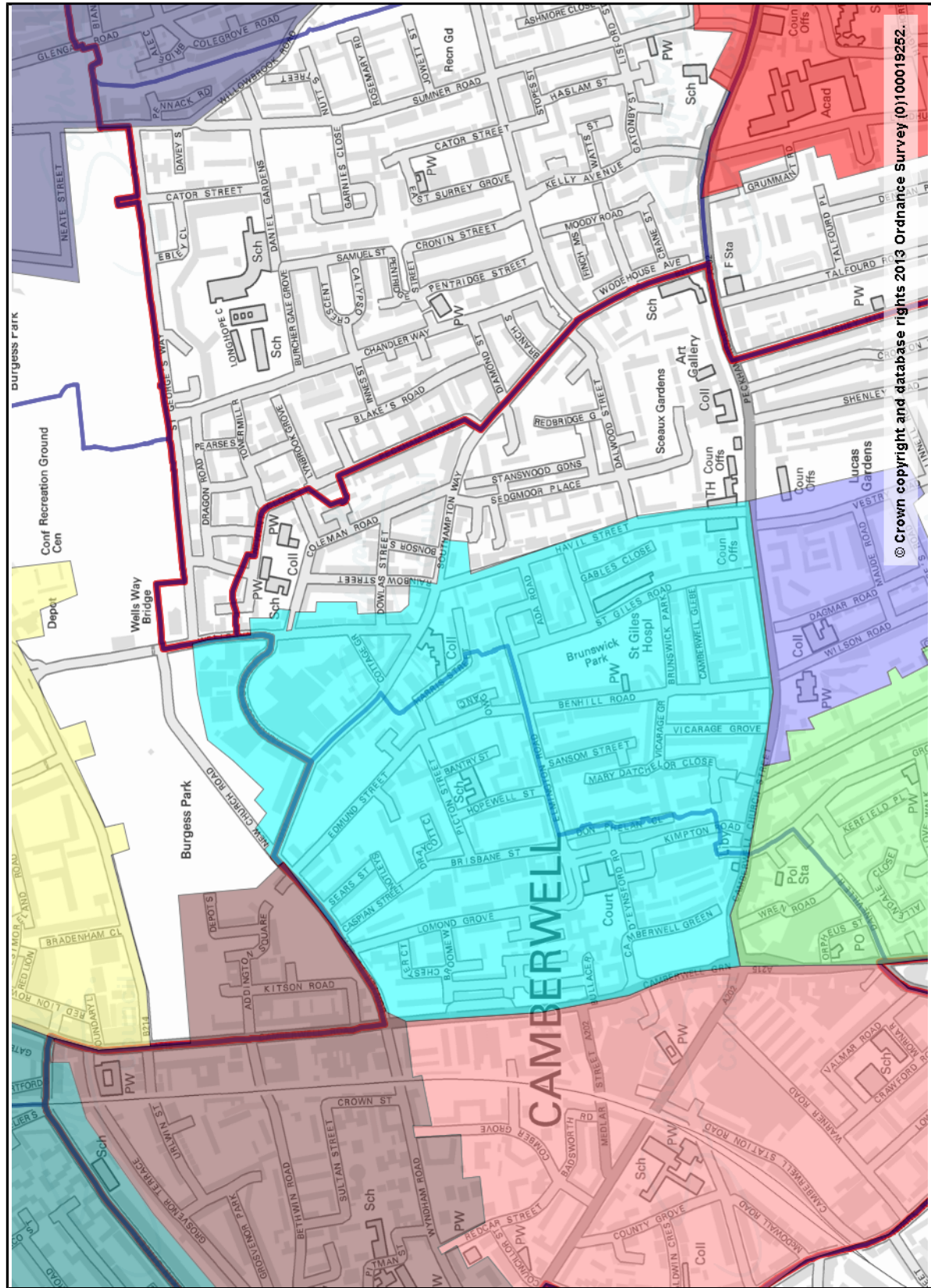
Background Papers	Held At	Contact
East Camberwell 1st stage CPZ consultation report (March 2007)	Southwark Council Environment and Leisure Public Realm projects Parking design 160 Tooley Street London SE1 2QH	Tim Walker 020 7525 2021
East Camberwell 2nd stage CPZ consultation report (August 2008)	As above	Tim Walker As above
Transport Plan 2011	As above and online: www.southwark.gov.uk/info/200107/transport_policy/1947/southwark_transport_plan_2011	Tim Walker As above

APPENDICES

No.	Title
Appendix 1	Map of recommended parking consultation area
Appendix 2	4 th stage parking zone review process

AUDIT TRAIL

Lead Officer	Des Waters, Head of Public Realm	
Report Author	Tim Walker, Senior Project Engineer	
Version	Final	
Dated	27 January 2015	
Key Decision?	No	
CONSULTATION WITH OTHER OFFICERS / DIRECTORATES / CABINET MEMBER		
Officer Title	Comments Sought	Comments Included
Director of Legal Services	Yes	Yes
Strategic Director of Finance and Corporate Services	No	No
Cabinet Member	No	No
Date final report sent to Constitutional Team	January 2015	



Show more on the map

CPZ

Ind. Value with Zone

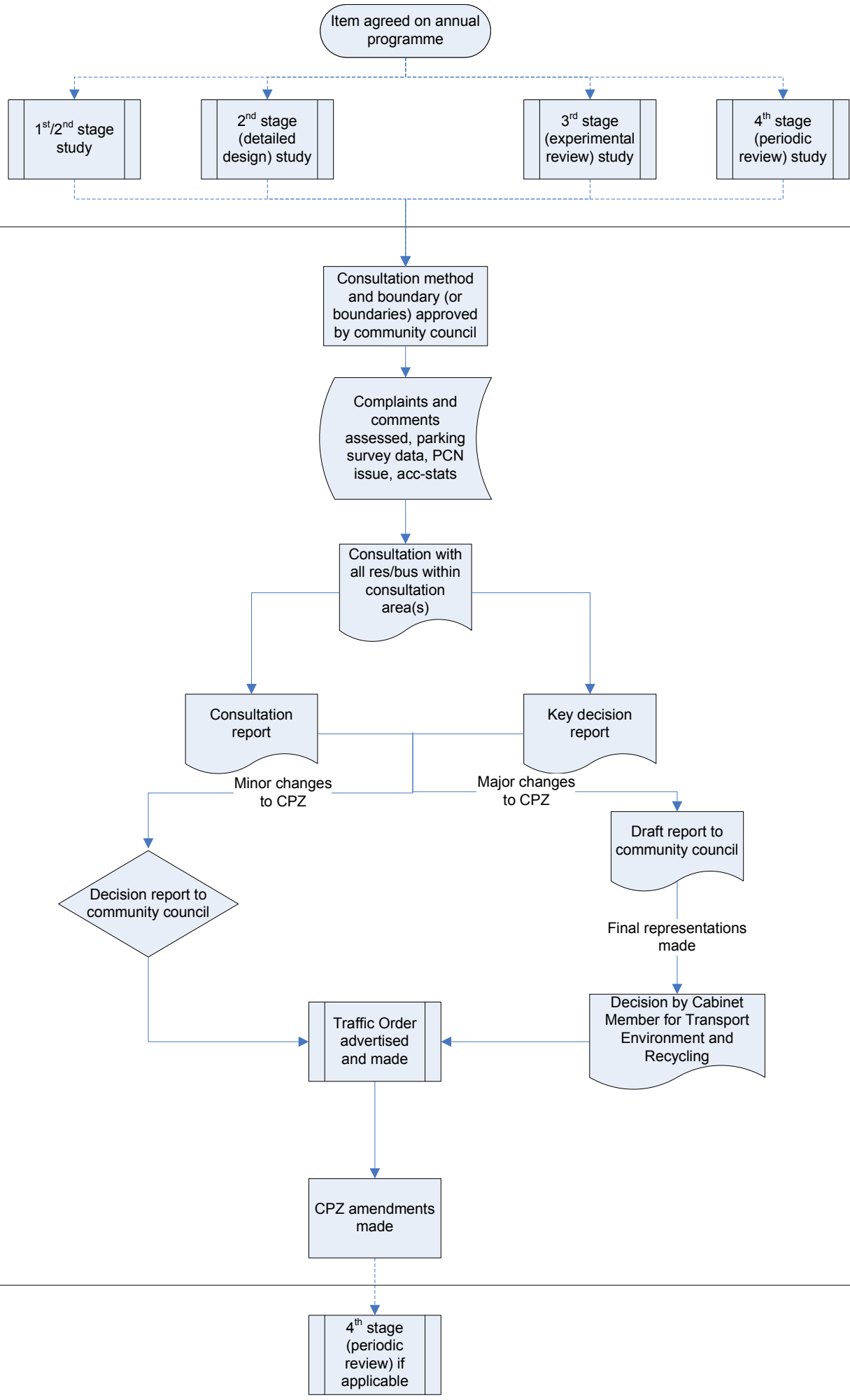
Red	B
Green	C1
Blue	C2
Purple	D
Yellow	E
Cyan	EC
Brown	F
Dark Green	G
Dark Blue	GR
Pink	H
Light Green	HH
Light Blue	J
Light Purple	K
Light Green	L
Light Blue	LG
Light Purple	M1
Light Green	M2
Light Blue	N
Brown	NC
Dark Green	SB
Dark Blue	T

Wards

- Blue square: Wards and councillors
- Grey square: Community Councils
- Red square: Community Council boundaries

© Crown copyright and database rights 2013 Ordnance Survey (0)100019252.

CPZ – 4th stage (periodic review)²³ consultation and study process



Item No. 15.	Classification: Open	Date: 7 February 2015	Meeting Name: Borough, Bankside and Walworth Community Council
Report title:		Cleaner Greener Safer: Funding Reallocation	
Ward(s) or groups affected:		Cathedrals, Chaucer, East Walworth, Faraday, Newington	
From:		Head of Public Realm	

RECOMMENDATIONS

1. That Borough, Bankside and Walworth Community Council approve the re-allocation of a total of £57,147 to seven projects – one in 2012/2013 Cleaner Greener Safer capital programme and six in the 2014/2015 Cleaner Greener Safer capital programme; and as part of the 2015/2016 programme, as set out in Appendix 1.
2. That Borough, Bankside and Walworth Community Council approve the partial change of scope for project Albert Barnes House sheds / yard project reference [106280].

BACKGROUND INFORMATION

3. Cleaner Greener Safer (CGS) is part of the London Borough of Southwark's capital programme. Between 2003 and 2014, £7,62m has been made available to local residents in Borough, Bankside and Walworth Community Council area, to apply for awards to make their local area a better place to live. The programme attracts hundreds of proposals ranging from a few hundred pounds for bulb planting to brighten up open spaces to tens of thousands of pounds to create community gardens. These projects often introduce new ideas such as outdoor gyms in public spaces, community gardens, public art and energy saving projects which not only make the borough cleaner, greener and safer but greatly contribute to a sustainable public realm by involving residents in the funding process and in the delivery of projects.

KEY ISSUES FOR CONSIDERATION

4. Appendix 1 highlights 10 projects which have a total under spend of £57,147.
5. It is recommended that under spend of £4,200 from the GMH dog gym, project reference [106277], is reallocated to projects where additional funding is required.
6. It is recommended that under spend of £1,700 from More table tennis tables in Newington Gardens, project reference [106292], is reallocated to a project where funding is required.
7. It is recommended that under spend of £1,100 from Octavia Hill estate hanging baskets phase 1, project reference [106394], is reallocated to projects

where additional funding is required.

8. It is recommended that under spend of £5,200 from Chapter Road improvements, project reference [105450], is reallocated to projects where additional funding is required.
9. It is recommended that under spend of £6,500 from Pelier estate brighter view, project reference [106400], is reallocated to projects where additional funding is required.
10. It is recommended that Walcorde Avenue bin stores, project reference [106030], is cancelled and the funding of £7,000 is reallocated to projects where additional funding is required. The cleansing department would be unable to adopt these stores and regular cleaning and possible future maintenance or repairs would not be carried out.
11. It is recommended that East Walworth conservation area improvement (Wansey Street), project reference [105990], is cancelled and the funding of £10,000 is reallocated to projects where additional funding is required. The cleansing department would be unable to adopt these stores and regular cleaning and possible future maintenance or repairs would not be carried out.
12. It is recommended that Aylesbury Youth Club lighting, project reference [106053], is cancelled and the award of £8000 is reallocated to projects where additional funding is required. The Youth Club building has closed and the funding is no longer required.
13. It is recommended that New Church Road cycle safety, project reference [106402], is cancelled and the award of £8,947 is reallocated to projects where additional funding is required. Since the award, the Parks department has secured separate funding and will undertake the work at this location.
14. It is recommended that Burgess park underpass, project reference [106384], is cancelled and the award of £4,500 is reallocated to projects where additional funding is required. Since the award, the Parks department has secured separate funding and will undertake the work at this location.
15. It is recommended that £10,850 is allocated to Gaitskell House railings phase 3, project reference [106400], to complete the final phase of the scheme.
16. It is recommended that £3,000 is allocated to Diamonds Memorial Garden, project reference [105578], to complete the scheme.
17. It is recommended that £3,000 is allocated to Elizabeth estate hanging baskets, project reference [106383], to reinstate a lapsed scheme.
18. It is recommended that £5,697 is allocated to Octavia Hill estate hanging baskets phase 2, project reference [106394], to extend an existing scheme.
19. It is recommended that £2,000 is allocated to Perkins Square play ground, project reference [106279], to complete the scheme.
20. It is recommended that £2,200 is allocated to Scovell playground, project reference [106287], as the implementation of this scheme requires additional

funding.

21. It is recommended that £1,700 is allocated to Tabard bird and bat boxes (parks and school project), project reference [106399], a project that was approved by councillors in response to a request from a local school.
22. It is recommended that a partial change of scope for project Albert Barnes House sheds / yard, project reference [106280], be approved. During the implementation of the project, the TRA requested that money allocated to install a planter with flowers be spent on a security gate across back entrance to improve residents' safety.
23. It is recommended that the remaining £28,447 is reallocated as part of the 2015/2016 CGS programme.

Policy implications

24. There are no policy implications associated with this report.

Community impact statement

25. The roles and functions of community councils include the promotion of involvement of local people in the democratic process. Community councils take decisions on local matters including environmental improvement and community safety as well as consultation on a wide range of policies and strategies that affect the area.
26. An explicit objective within community councils is that they be used to actively engage as widely as possible with, and bring together, Southwark's diverse local communities on issues of shared or mutual interest. The CGS programme is an important tool in achieving community participation.
27. In fulfilling the above objectives that community councils have of bringing together and involving Southwark's diverse local communities, consideration has also been given to the council's duty under The Equality Act 2010 which requires the council to have due regard when taking decision to the need to:
 - Eliminate discrimination, harassment, victimisation or other prohibited conduct;
 - Advance of equality of opportunity between persons who share a relevant protected characteristics and those who do not share it;
 - Foster good relations between those who share a relevant characteristic and those that do not share it.
28. Of particular regard are issues of age, disability, gender reassignment, pregnancy and maternity, race, religion or belief, sex, sexual orientation.
29. Having due regard to the need to advance equality of opportunity is further defined in S.149 as having due regard to the need of:
 - Remove or minimise disadvantages connected with a relevant protected characteristic;
 - Take steps to meet the different needs of persons who share a relevant protected characteristic;

- Encourage persons who share a relevant protected characteristic to participate in public life or any other activity in which they are under-represented.

Resource implications

30. This is the reallocation of existing CGS funding of £57,147 that was originally awarded in 2010/2011, 2012/2013, 2013/2014 and 2014/2015. CGS funding is devolved to community councils to spend on suitable projects.
31. All professional fees related to the project are also treated as the capital costs of the project. Where projects are awarded as a grant to organisations, the community council award letter will not include the professional fees which will be charged direct to project costs.
32. CGS projects must be completed within two years of award of funding. Projects that are unlikely to be completed within two years will be reported to community councils and available budgets may be reallocated to other projects. Revenue costs not covered by maintenance or the contractual liability period will fall upon the asset owner. The business unit will be notified of the likely costs before the schemes proceeds, in order to secure permission to implement the scheme.
33. After the defects and liability period, or three year maintenance period in the case of planting works, all future maintenance is assumed by the asset owner, for example Housing, Parks, Highways, or in some cases external asset owners. Therefore, there are no revenue implications to the Public Realm projects business unit as a result of approving the proposed allocation.
34. The total expenditure and sources of funding for the scheme will be monitored and reported on as part of the overall capital programme.

Consultation

35. All cleaner greener safer projects require consultation with stakeholders, including the project applicant, local residents and tenants and residents associations where appropriate.

SUPPLEMENTARY ADVICE FROM OTHER OFFICERS

Director of Legal Services

36. The allocation of the Cleaner Greener Safer capital fund ('CGS') is an executive function, delegated by the leader to community councils.
37. Community councils are 'area committees' within the meaning of the Act and executive functions can be delegated to them by the leader.
38. This report is recommending that the Borough, Bankside and Walworth Community Council approve the reallocation of available funds from the 2010/2011, 2012/2013, 2013/2014 and 2014/2015 programmes as specified at appendix 1 to the 2015-16 capital funding allocation. The power for this function is derived from Part 3H paragraph 11 of the constitution which states that community councils have the power of "Approval of the allocation of funds to cleaner, greener, safer capital and revenue schemes of a local nature, using the

resources and criteria identified by the cabinet”.

39. The cabinet member for transport environment and recycling approved the funding for the 2010/2011 programme in October 2009, the 2012/2013 programme in October 2011, the 2013/2014 programme in September 2012 and the 2014/2015 programme in October 2013 by exercising his powers under Part 3D paragraph 2 of the constitution. Where funding needs to be reallocated the community council approval being sought here is therefore the appropriate constitutional step in the process.
40. Community council members also have powers under paragraph 12 of Part 3H of the constitution to oversee and take responsibility for the development and implementation of the local schemes.
41. In allocating funding under the CGS community councils must have regard to the council's equality duty set out in section 149 of the Equality Act 2010. The report author has demonstrated how those duties need to be considered in the body of the report at paragraphs 14 to 17 in the community impact statement.

Strategic Director of Finance and Corporate Services

42. The report requests the approval of Borough, Bankside and Walworth Community Council for the re-allocation of a total of £57,147 to projects in the 2012/2013, 2014/2015 and 2015/2016 Cleaner Greener Safer programmes, as set out in Appendix 1.
43. It is noted that the re-allocation of the funding will be contained within the existing departmental cleaner greener safer capital budgets allocated as part the council's capital programme.
44. Staffing and any other costs connected with this recommendation to be contained within existing departmental revenue budgets.

BACKGROUND DOCUMENTS

Background Papers	Held At	Contact
Borough, Bankside and Walworth Community Council Meeting held on Saturday 1 February 2014, Minutes item 12 http://modern.gov.southwark.gov.uk/ieListDocuments.aspx?CId=350&MId=4675&Ver=4	Environment and Leisure / Public Realm Projects 160 Tooley Street	Andrea Allen 020 7525 0860
Borough, Bankside and Walworth Community Council Meeting held on Monday 22 April 2013, Minutes item 9 http://modern.gov.southwark.gov.uk/ieListDocuments.aspx?CId=350&MId=4314&Ver=4	Environment and Leisure / Public Realm Projects 160 Tooley Street	Andrea Allen 020 7525 0860
Borough, Bankside and Walworth Community Council Meeting held on 10 March 2012	Environment and Leisure / Public Realm Projects 160 Tooley Street	Andrea Allen 020 7525 0860
Walworth Community Council Meeting held on 16 March 2010	Environment and Leisure / Public Realm Projects 160 Tooley Street	Andrea Allen 020 7525 0860

APPENDIX

No.	Title
Appendix 1	Borough, Bankside and Walworth Community Council CGS Capital Funding 2014-15

AUDIT TRAIL

Lead Officer	Des Waters, Head of Public Realm	
Report Author	Andrea Allen, Senior Project Manager	
Version	Final	
Dated	27 January 2015	
Key Decision?	No	
CONSULTATION WITH OTHER OFFICERS / DIRECTORATES / CABINET MEMBER		
Officer Title	Comments Sought	Comments Included
Director of Legal Services	Yes	Yes
Strategic Director of Finance and Corporate Services	Yes	Yes
Cabinet Member	No	No
Date final report sent to Constitutional Team		27 January 2015

Appendix 1
 BOROUGH BANKSIDE AND WALWORTH CC AVAILABLE CGS CAPITAL FUNDING 2014-15
 Cleaner Greener Safer programme
 Funding reallocation
 Projects with underspend

Ward	Cathedrals	Chaucer	East Walworth	Faraday	Newington	Total	Comments
Scheme title							
106277 GMH Dog gym	£4,200						Scheme completed with underspend
106292 More table tennis tables - Newington Gardens		£1,700					Scheme completed with underspend
106030 Walcorde Avenue bin stores			£7,000				Scheme cancelled - not feasible
105990 East Walworth Conservation area improvement (Wansey Street)			£10,000				Scheme cancelled - not feasible
106053 Aylesbury Youth Club lighting				£8,000			Scheme cancelled as club building closed.
106402 New Church Road cycle safety				£8,947			Scheme cancelled - to be included in Burgess Park works
106384 Burgess pass underpass				£4,500			Scheme cancelled - to be included in Burgess Park works
106394 Octavia Hill estate hanging baskets phase 1				£1,100			Scheme completed with underspend
105450 Chapter Road improvements					£5,200		Scheme completed with underspend
106400 Pelier estate bright view					£6,500		Scheme completed with underspend
Available underspend by ward - February 2015	£4,200	£1,700	£17,000	£22,547	£11,700	£57,147	Available funding for reallocation
Funds allocated to other schemes							
106400 Gaiskell House railings phase 3				£10,850.00			Final phase funded from underspend
105578 Diamonds Memorial garden				£3,000.00			Project required additional funding to be completed
106383 Elizabeth estate hanging baskets				£3,000.00			Reinstatement of previous cgs scheme
106394 Octavia Hill estate hanging baskets phase 2				£5,697.00			Extension of Octavia Hill hanging baskets
106279 Perkins Square play ground	£2,000.00						Project required additional funding to be completed
106287 Scovell playground	£2,200.00						Project requires additional funding
106399 Tabard bird and bat boxes (Parks and school project)		£1,700.00					Ward councillors approved scheme in April 10/14
Total allocated to alternative projects	£4,200.00	£1,700.00	£0.00	£22,547.00	£0.00	£28,447.00	
Available funds to reallocate by ward	£0.00	£0.00	£17,000.00	£0.00	£11,700.00	£28,700.00	Available to add to 2015-16 CGS funding

Item No. 16.	Classification: Open	Date: 7 February 2015	Meeting Name: Borough, Bankside and Walworth Community Council
Report title:		Cleaner Greener Safer 2015/16: Capital Funding Allocation	
Ward(s) or groups affected:		Cathedrals, Chaucer, East Walworth, Faraday, Newington	
From:		Head of Public Realm	

RECOMMENDATION

1. To approve the allocation of funds for the 2015-16 Cleaner Greener Safer (CGS) capital programme in the Borough, Bankside and Walworth community council area from the list of applications set out in appendix 1.

BACKGROUND INFORMATION

2. The CGS capital programme has been running since 2003.
3. In the first twelve years of the CGS programme, £30,393,000 has been allocated to community councils leading to 1,973 projects being approved.
4. In the Borough, Bankside and Walworth Community Council area, £7,624,312 has been allocated to 446 projects, 394 of which have been completed to date.
5. Examples of the types of projects that have been funded include:
 - Parks, community gardens, landscaping, tree planting and wildlife areas
 - Children's playgrounds, youth facilities, ball courts and cycle tracks
 - Lighting, security measures, pavements, streets, and tackling 'grot spots'
 - Grants to local groups to self-deliver projects

KEY ISSUES FOR CONSIDERATION

6. There is £447,619 available for the 2015/16 CGS capital programme for new projects in the Borough, Bankside and Walworth Community Council area.
7. Unallocated funding from previous years' programmes will also be reallocated subject to approval in a separate report.
8. Eligible proposals must bring about a permanent improvement and make an area cleaner, greener or safer.
9. Proposals with revenue costs, including salaries or computer equipment, feasibility studies, costs for events, festivals, workshops or other one-off events are not eligible for capital funding. CCTV proposals, internal improvements to housing property, works on schools where there is no access to the general

public are also not eligible. Works on private property are not eligible unless there is a long-term guarantee of public access or a demonstrable public benefit.

10. The application form invited expressions of interest for the applicants to deliver projects themselves. A due diligence exercise to ensure that this is both practical and realistic has been undertaken as part of the feasibility process. In such cases, the council would give the funding allocation to the applicant in the form of a capital grant, with appropriate conditions attached.

Policy implications

11. The CGS programme is fully aligned with the council's policies around sustainability, regeneration and community engagement.

Community impact statement

12. The roles and functions of community councils include the promotion of involvement of local people in the democratic process. Community councils take decisions on local matters including environmental improvement and community safety as well as consultation on a wide range of policies and strategies that affect the area.
13. An explicit objective within community councils is that they be used to actively engage as widely as possible with, and bring together, Southwark's diverse local communities on issues of shared or mutual interest. The Cleaner Greener Safer programme is an important tool in achieving community participation.
14. In fulfilling the above objectives that community councils have of bringing together and involving Southwark's diverse local communities, consideration has also been given to the council's duty under The Equality Act 2010 which requires the council to have due regard when taking decision to the need to:
 - Eliminate discrimination, harassment, victimisation or other prohibited conduct;
 - Advance of equality of opportunity between persons who share a relevant protected characteristics and those who do not share it;
 - Foster good relations between those who share a relevant characteristic and those that do not share it.
15. Of particular regard are issues of age, disability, gender reassignment, pregnancy and maternity, race, religion or belief, sex, sexual orientation.
16. Having due regard to the need to advance equality of opportunity is further defined in s.149 as having due regard to the need of:
 - Remove or minimise disadvantages connected with a relevant protected characteristic;
 - Take steps to meet the different needs of persons who share a relevant protected characteristic;
 - Encourage persons who share a relevant protected characteristic participate in public life or any other activity in which they are under-represented.

17. All ideas for CGS projects come directly from the local community via a simple project nomination form available in electronic and paper format.

Resource implications

18. The funding for the 2015/16 CGS capital programme was approved by the cabinet and is part of the council's overall capital programme as detailed in the launch of CGS capital programme 2015/16 report dated August 2014.
19. All professional fees related to the project are also treated as the capital costs of the project. Where projects are awarded as a grant to organisations, the community council award letter will not include the professional fees which will be charged direct to project costs.
20. CGS projects must be completed within two years of award of funding. Projects that are unlikely to be completed within two years will be reported to community council and available budgets may be reallocated to other projects. Revenue costs not covered by maintenance or the contractual liability period will fall upon the asset owner. The business unit will be notified of the likely costs before the schemes proceeds, in order to secure permission to implement the scheme.
21. After the defects and liability period, or three year maintenance period in the case of planting works, all future maintenance is assumed by the asset owner, for example housing, parks, highways, or in some cases external asset owners. Therefore, there are no revenue implications to the public realm projects business unit as a result of approving the proposed allocation.
22. The total expenditure and sources of funding for the scheme will be monitored and reported on as part of the overall capital programme.
23. Value for money will be ensured when the contract is procured by following the council's contract standing orders.

Consultation

24. All CGS projects require consultation with stakeholders, including the project applicant, local residents, tenants and residents associations and local community groups where appropriate.

SUPPLEMENTARY ADVICE FROM OTHER OFFICERS

Director of Legal Services

25. The allocation of the Cleaner, Greener, Safer capital fund ('CGS') is an executive function, delegated by the leader to community councils.
26. Community councils are 'area committees' within the meaning of the Act and executive functions can be delegated to them by the leader.
27. This report is recommending that the Borough, Bankside and Walworth Community Council approve the allocation of funds to the individual projects specified at appendix 1. The power for this function is derived from Part 3H paragraph 11 of the constitution which states that community councils

have the power of “Approval of the allocation of funds to cleaner, greener, safer capital and revenue schemes of a local nature, using the resources and criteria identified by the cabinet”.

28. The cabinet member for transport environment and recycling approved the funding for the 2015/2016 programme in August 2014 by exercising his powers under Part 3D paragraph 2 of the constitution; and the community council approval being sought here is therefore the next constitutional step in the process.
29. Community council members also have powers under paragraph 12 of Part 3H of the constitution to oversee and take responsibility for the development and implementation of the local schemes.
30. In allocating funding under the CGS community councils must have regard to the council’s equality duty set out in section 149 of the Equality Act 2010. The report author has demonstrated how those duties need to be considered in the body of the report at paragraphs 14 to 17 in the community impact statement.

Strategic Director of Finance and Corporate Resources

31. This report recommends approval of the allocation of funds for the 2015/16 Cleaner Greener Safer programme in the Borough, Bankside and Walworth Community Council area from the list of applications set out in Appendix 1.
32. The strategic director of finance and corporate resources notes the resource implications contained within the report, and confirms that the capital funding for the CGS programme has been approved as part of the overall council capital programme.
33. Officer time and any other costs connected with this recommendation will be contained within existing budgeted revenue resources.

BACKGROUND DOCUMENTS

Background Papers	Held At	Contact
Launch of Cleaner Greener Safer Capital Programme 2015/16 - August 2014	http://modern.gov.southwark.gov.uk/ieDecisionDetails.aspx?ID=4798	Michelle Normanly 020 7525 0862

APPENDICES

No.	Title
Appendix 1	Borough, Bankside and Walworth Community Council Cleaner Greener Safer Capital programme 2015/16: Applications

AUDIT TRAIL

Lead Officer	Deborah Collins, Strategic Director of Environment and Leisure	
Report Author	Michelle Normanly, Senior Project Manager	
Version	Final	
Dated	27 January 2015	
Key Decision?	No	
CONSULTATION WITH OTHER OFFICERS / DIRECTORATES / CABINET MEMBER		
Officer Title	Comments Sought	Comments included
Director of Legal Services	Yes	Yes
Strategic Director of Finance and Corporate Resources	Yes	Yes
Cabinet Member	No	No
Date final report sent to Constitutional Team	27 January 2015	

**Borough, Bankside and Walworth Community Council
Cleaner Greener Safer Capital programme 2015/16: Applications**

Reference	Proposal Name	Ward
400176	Lucy Brown House fish pond	Cathedrals
370694	Toddler time! Community playground revamp at Webber Row.	Cathedrals
373969	Extension of heritage railings in Geraldine Mary Harmsworth Park	Cathedrals
376032	Lamlash Garden	Cathedrals
376906	Beautifying Pattison	Cathedrals
400192	Continuation of gardening project at Lant and Bittern St TRA	Cathedrals
400191	Cooper Close 2 wheeled solution	Cathedrals
377597	Peace at last	Cathedrals
377621	New play for Little Dorrit Park	Cathedrals
377645	Retreat at Little Dorrit	Cathedrals
377736	Lighting, play and planting for Mawdley House courtyard, on Webber and Quentin Estate	Cathedrals
377779	The Rochester Estate bubblegum adventure playground	Cathedrals
377945	Styles House bin improvements	Cathedrals
378011	Christ Church Cross	Cathedrals
378045	Upgrading OMeara Street	Cathedrals
378065	Floodlighting Most Precious Blood Church	Cathedrals
378069	Queensborough Community Centre	Cathedrals
378075	Scovell Playground	Cathedrals
378086	LSborough & Scovell Tra Playground	Cathedrals
378145	Restoration of garden area and grotto	Cathedrals
378210	More air for London	Cathedrals
378214	Faith in gardens	Cathedrals
400209	Health and environment: start cycling, improve cycle infrastructure	Cathedrals
400243	Pattball	Cathedrals
355082	Newington Gardens outdoor gym.	Chaucer
360858	Keep Cartwright House tidy	Chaucer
368048	Rockingham wildbird project.	Chaucer
371107	Symington House and Dawkins Court interactive wild garden	Chaucer
374287	Green Walk (Tower Bridge Road improvement)	Chaucer
374313	Albert Barnes House back yard raised flowerbeds	Chaucer
374326	Greening Thorn Ham	Chaucer
377215	Peveril House pocket park	Chaucer

**Borough, Bankside and Walworth Community Council
Cleaner Greener Safer Capital programme 2015/16: Applications**

Reference	Proposal Name	Ward
377225	Meadow Row	Chaucer
377253	County Street urban garden	Chaucer
377560	Woodland corner for St.George's Gardens	Chaucer
400204	Saint Matthews at the Elephant garden play space	Chaucer
377947	Safe Food Growing for Rockingham	Chaucer
378085	Betsham House play area and garden.	Chaucer
378090	Applegarth Community Notices	Chaucer
400270	Manciple St improvements	Chaucer
400271	Harper Row shops	Chaucer
368987	Making Meakin more	Chaucer
376598	Rock-it kids Gardening Club	Chaucer
354549	Bring your bike to Burgess Park	East Walworth
355400	Reed planting around Burgess Park lake	East Walworth
355420	Funding towards new club house	East Walworth
373500	East Street Market/Nursery Row Park gateway cleanup	East Walworth
374938	Way signs for the East Walworth Green Links	East Walworth
377393	Surrey Square Park Nature Garden Noticeboard & Interpretation Boards	East Walworth
377745	Alvey Estate playground upgrade	East Walworth
377864	Regeneration of East Street	East Walworth
377975	Gardening and environmental education for all at Pembroke Community Garden throughout the year	East Walworth
378088	Mardyke Playground	East Walworth
378247	Surrey Square Park bulb planting event	East Walworth
378844	Larcom Street Tree improvements	East Walworth
400224	Locksfield Leisure and Salisbury Estate improvement	East Walworth
400240	Kinglake Estate Playground improvements	East Walworth
377035	Southwark Cricket Development Programme at Burgess Park Cricket Academy	East Walworth
378262	Turning over a new leaf	East Walworth
364455	Bike safe	Faraday
400183	Bring your bike to Burgess Park	Faraday
376819	Cadiz St/Walworth Place enhancement: spring-flowering trees, hanging baskets & litter bins	Faraday

**Borough, Bankside and Walworth Community Council
Cleaner Greener Safer Capital programme 2015/16: Applications**

Reference	Proposal Name	Ward
400186	Hanging baskets - Octavia Hill Estate phase 2	Faraday
400187	Hanging baskets - Elizabeth Estate	Faraday
377363	The earth moving project	Faraday
377372	Refurbishment & modernise existing playgrounds	Faraday
377546	Missenden play area	Faraday
377846	Continuing the development of children/sports playground on Gateway Estate	Faraday
378172	Celebration of the life of Richard Muzira, Southwark artist and volunteer at CoolTan Arts	Faraday
378279	The tree on Inville Road	Faraday
378304	Wendover playground	Faraday
378325	Secured cycle park	Faraday
400230	St Peter's Monkey Park & Churchyard community space project (Concrete Circle): Phase 3	Faraday
400247	Pattball	Faraday
375505	Making a difference	Faraday
378116	Re-cycle and compost clean up	Faraday
400163	Slade Picnic Area	Newington
400164	Improving the Brandon Estate	Newington
400165	Improving the Brandon Estate - additional planting	Newington
354830	Eglington Court Lorrimore Road SE17 3LY Renew Fence / Paving and improve the 2 pathways leading to residents doors	Newington
355201	Improvements at Slade Walk	Newington
359622	Improvements to Community Club area	Newington
372931	Outdoor gym Alberta Estate	Newington
372945	Children's playground on Ambergate Street	Newington
372950	Planting in Ambergate Street	Newington
372956	Seating communal gardens Ambergate Street	Newington
373956	Pasley Park (Surrey Gardens) Chapter Road entrance improvements	Newington
375260	Walworth allotment winter tree surgeon	Newington
376217	Kids gardening club	Newington
376818	Lorrimore Gardens play park	Newington

**Borough, Bankside and Walworth Community Council
Cleaner Greener Safer Capital programme 2015/16: Applications**

Reference	Proposal Name	Ward
377013	Covered cycle storage for Fielding Street (1-38) residents	Newington
377388	Completion of Brandon 2 play area project	Newington
377643	Safe mail	Newington
377663	Newington shrubs and flowerbeds	Newington
377684	New Improved recycling centre on Hampton Street.	Newington
400205	Children's play area and outdoor gym Penrose Estate	Newington
377878	Walworth Society Green Link Heritage Entrance to Sturgeon Road	Newington
377916	Greener Draper 2015	Newington
377963	Conquering Carter Street Fly Tippers!	Newington
378083	Improvements to grot spot at Walworth Garden Farm	Newington
378100	Designing out grot spot at Walworth Garden Farm	Newington
378191	CoolTan Arts Walworth Road signage	Newington
378204	Walworth cycle link	Newington
378207	Rutley Close landscaping and community gardening project	Newington
378344	Kennington Park Extension Orchard Growing space	Newington
400248	Pattball	Newington

**BOROUGH, BANKSIDE AND WALWORTH COMMUNITY COUNCIL AGENDA DISTRIBUTION
LIST (OPEN)
MUNICIPAL YEAR 2014-2015**

NOTE: Original held by Constitutional Team (Community Councils) all amendments/queries to Sean Usher Tel: 020 7525 2713

Name	No of copies	Name	No of copies
To all Members of the Community Council			
Councillor Martin Seaton (Chair)	1	Others	
Councillor Claire Maugham (Vice-Chair)	1	Elizabeth Olive, Audit Commission	1
Councillor Maisie Anderson	1		
Councillor Neil Coyle	1		
Councillor Karl Eastham	1		
Councillor Paul Fleming	1	Total:	99
Councillor Dan Garfield	1	Dated: 30 January 2015	
Councillor Eleanor Kerslake	1		
Councillor Lorraine Lauder MBE	1		
Councillor Maria Linforth-Hall	1		
Councillor Rebecca Lury	1		
Councillor Vijay Luthra	1		
Councillor Darren Merrill	1		
Councillor Adele Morris	1		
Councillor David Noakes	1		
Press			
Southwark News	1		
South London Press	1		
Members of Parliament			
Simon Hughes, MP	1		
Officers			
Constitutional Officer (Community Councils) 2 nd Floor Hub 4, 160 Tooley St.	78		
Pauline Bonner, CCDO, 2 nd Floor Hub 4, 160 Tooley St	1		
Trevor Swaby, Youth Development worker, Maddock Way - 19 (Brandon Youth & Community Centre)	1		